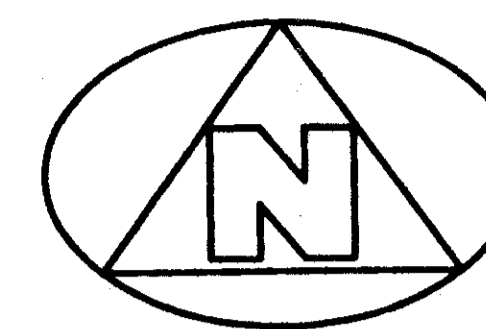


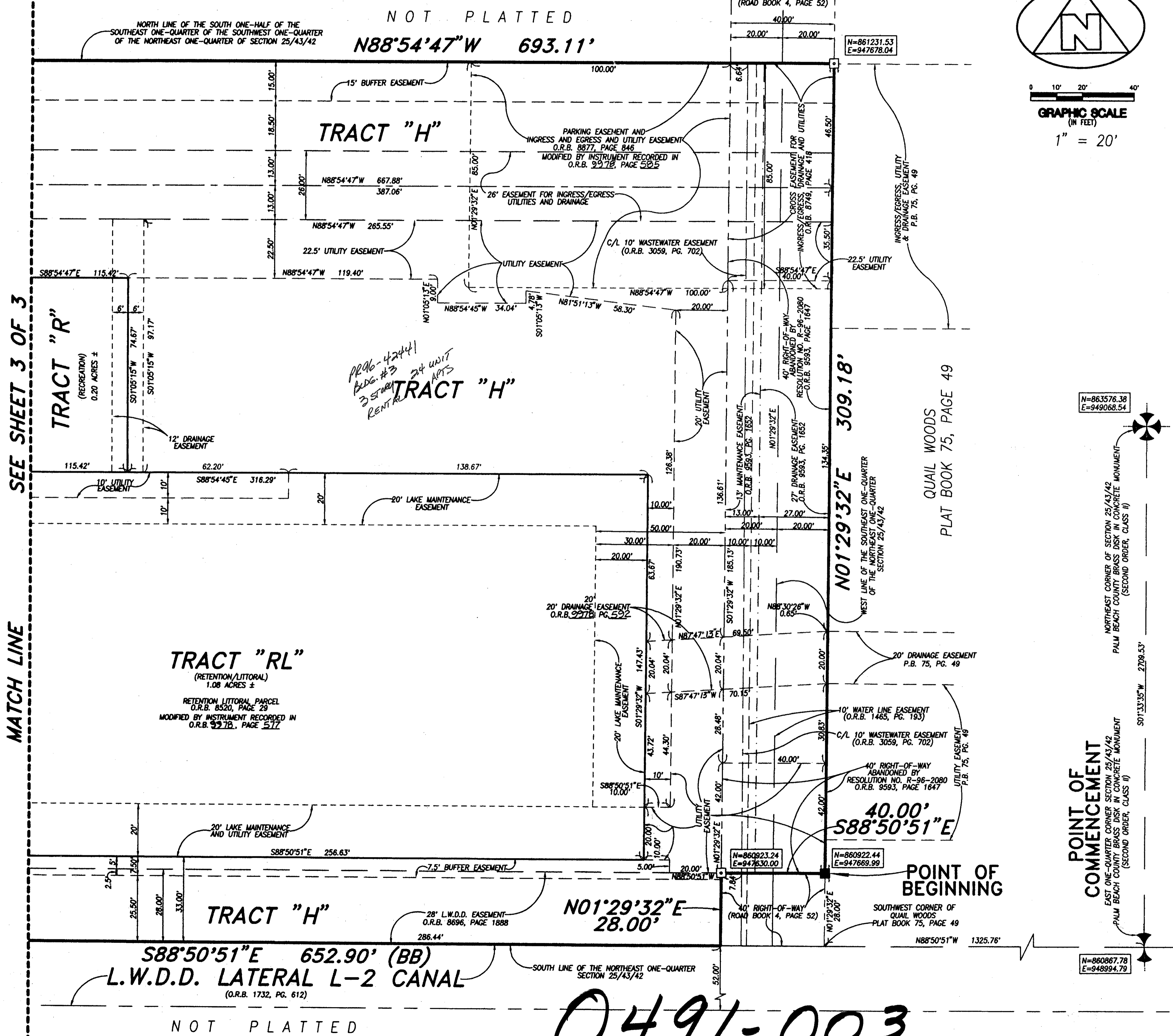
QUAIL WOODS PLAT NO. 2

LYING AND BEING IN THE NORTHEAST ONE-QUARTER OF SECTION 25, TOWNSHIP 43 SOUTH, RANGE 42 EAST, PALM BEACH COUNTY, FLORIDA.

PET. 85-86B
5/2/21E

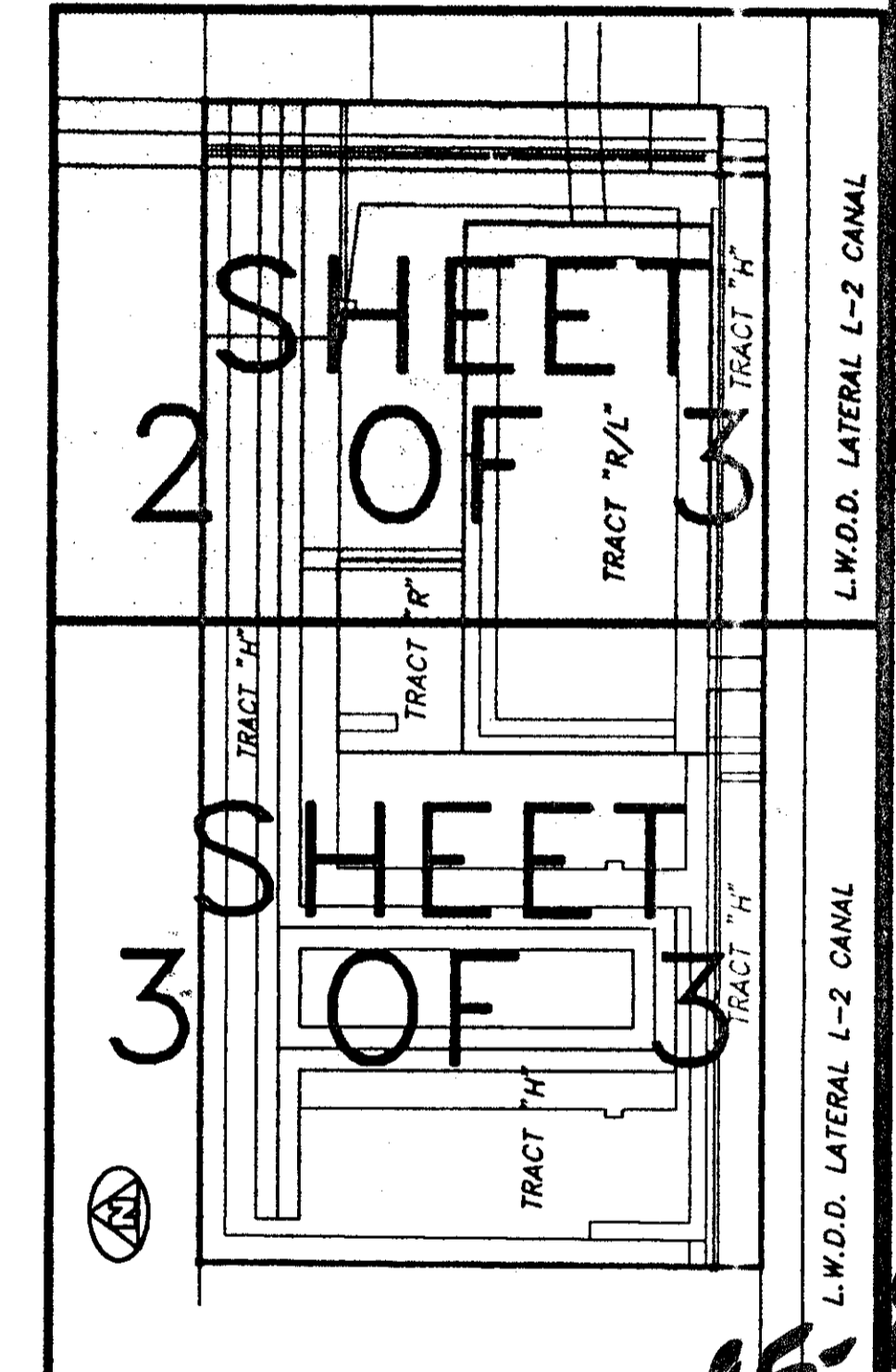


GRAPHIC SCALE
(IN FEET)
1" = 20'



SEE SHEET 3 OF 3

MATCH LINE



PET. 85-86B
PARCEL D PH 2

SUBDIVISION * QUAIL WOODS
BOOK 81 PAGE 18
FLOOD ZONE B FLOOD MAP # 1550
QUAD # 31 ZONING RA
SE - ZIP CODE 33409
PUD NAME QUAIL WOODS PLAT 2

- SURVEYOR'S NOTES AND LEGEND:**
- (BB) DENOTES THE BASE BEARING. BEARINGS ARE BASED ON STATE PLANE GRID AZIMUTHS ACCORDING TO THE TRANSVERSE MERCATOR PROJECTION OF THE FLORIDA EAST ZONE, N.A.D. 83, AS PER THE 1980 ADJUSTMENT AND ALL BEARINGS ARE RELATIVE HERETO.
 - IN THOSE INSTANCES WHERE UTILITY/DRAINAGE STRUCTURES ARE CONSTRUCTED IN CONFLICT WITH THE PLATTED PERMANENT CONTROL POINTS (P.C.P.) POSITION, STRADOLERS MONUMENTED AS PERMANENT CONTROL POINTS WILL BE SET TO REFERENCE THE PLATTED P.C.P. POSITION.
 - INES WHICH INTERSECT CURVES ARE NOT RADIAL, UNLESS OTHERWISE NOTED.
 - C/L DENOTES A CENTERLINE
 - P.B., PG. DENOTES PLAT BOOK & PAGE
 - O.R.B. DENOTES OFFICIAL RECORDS BOOK
 - L.W.D.D. DENOTES LAKE WORTH DRAINAGE DISTRICT
 - DENOTES A SET #2424 PERMANENT REFERENCE MONUMENT (P.R.M.)
 - DENOTES A FOUND #2424 PERMANENT REFERENCE MONUMENT (P.R.M.)
 - N=860909.29 DENOTES NORTHING COORDINATE
 - E=948322.77 DENOTES EASTING COORDINATE
 - F.P. & L. DENOTES FLORIDA POWER AND LIGHT

THIS INSTRUMENT WAS PREPARED BY WM. R. VAN CAMPEN, R.L.S., IN AND FOR THE OFFICES OF BENCH MARK LAND SURVEYING & MAPPING, INC., 4152 WEST BLUE HERON BOULEVARD, SUITE 121, RIVERA BEACH, FLORIDA

BENCH MARK
Land Surveying and Mapping, Inc.
4152 West Blue Heron Blvd, Suite 121, Riviera Beach, FL 33404
Fax (407) 844-9659 Phone (407) 848-2102

RECORD PLAT			
QUAIL WOODS PLAT NO. 2			
DWN S. GUTHRIE	FB	DATE 11/13/1996	WO.# P10
CKD	FILE P10-76.dwg	SCALE 1" = 20'	SHEET 2 OF 3

0491-003

8/1/18